

THE  
MINNESOTA

MG

GROUP GAZETTE



OCTOBER 1999

## FALL COLOUR TOUR (NEW DATE)

The Fall Colour [I can spell it that way - I'm Canadian] Tour will happen on the 9th of October this year. We'll meet at The Afton Coffee Shop in Afton at 0900


Take I-94 east exit at Washington County 18. (St Croix Trail Tr. - Old Highway 95) Afton is 4 miles south. As you enter the village of Afton do not take the right turn to the west on 18. Continue straight into the village on County 21. The Coffee Shop is on the left about 100 metres on. Just past the Afton Inn. Please park in the spaces on the street

We'll depart from Afton at 1000 on a tour designed to be both pretty and interesting. Be sure to collect your maps before setting out and ensure you have the plastic baggie; you'll need it later on. There will likely be a bit of a treasure hunt and an intermediary pause before we stop for lunch at 1200. Please complete the menu choices - indicate how many of each you'd like [please see the choices below.] Please mail your choices and a cheque payable to "The Creamery" to me by 1st October at:

Al Webster  
4293 Trading Post Trail  
Afton, MN 55001  
email: vawebster@aol.com

## Presidents Corner

Doug Madson



As we pulled into the parking lot of Peter Welch's marina in West Vancouver, it appeared that the Kelseys were still speaking to each other. They must have a pretty good relationship for it to survive leading several of the MMGG MG99 contingent through downtown Vancouver, in rush hour no less, on the drive to Whistler mountain. The instructions for the drive, in tulip rally format, were in our registration packet and ever since our check-in on Tuesday I had not been looking forward to having Mary navigate. It's not that she's a bad navigator. It's my "guy thing" not to take direction well that's the problem. We had also gone on a "hare and hound" rally several years ago and it had not been pretty. (If I ever plan a rally where there is the remotest chance that spouses will navigate, there will be two optional final legs - your choice - directions either to a marriage counselor or a divorce attorney.) In any case, Al and Sharon had saved the day by volunteering to lead. There was also a contest

(Continued on page 2)

## Minnesota MG Group Officers

President	Doug Madson	320-251-0317
Vice President	Simon Bosworth	651-454-7413
Treasurers	Dan & Jeanette Shidla	612-831-0291
Secretary	Cindy O'Brien	612-936-9335
N.L. Editor	Phil Vanner	612-789-4614
N.L. Publisher	Larry Henle	can't get rid of it
Regalia	Jim Lymburn	612-780-9241
Tool Control	Roger Karnopp	651-454-1379
Club Liaison	Brian McCullough	651-462-0145
Membership	Tim Crain	612-920.2489
	Jim Pennoyer	651-229-5396
2001 Chairs	Dick Wallrich	651-644-0154
	Dave Stovall	612-894-4203

## MEMBERSHIPS

Initial membership is \$30 (this gets you up to two name badges- additional name badges are \$5.00 each)

Dues are \$25 per household per year for established members. Includes 1 year subscription to the MMGG Gazette.

Fill out the form on page 3 and send it with your check

## Presidents Corner

*(Continued from page 1)*

for those inclined to answer questions about things seen on the route, but more on that later.

The "Spectacular Drive of Your Life," as the trip to Whistler was billed, was already proving to be super as we pulled into the marina for the first stop. The place was a forest of masts sprouting from some beautiful boats, but we weren't here to look at boats. As it turns out Peter

Welch not only owns several marinas, he also owns a superb collection of MGs. In a purpose-built building at the marina are housed some of the world's rarest MGs - all in a absolutely spectacular (there's that word again) condition. There are about 15 cars in all, with just about all the pre-and post-war models included. Of note was a mid-30's

K3 Magnette. One of about ten in existence, this example won "Best British" at the Pebble Beach Concours in 1998 and was gorgeous in Racing Green. It has a sequential inline pre-selector gearbox and supercharging. Amazing stuff, considering that most race cars today have similar equipment, but MG put this car on race tracks all over Europe over 60 years ago. It is claimed that this machine was hitting 100 without even breathing hard at a time when Indy racers were barely hitting that mark. I would sell everything for the Airline coupe in black that was on display. A jewel of an auto with metal sliding sunroof sporting three oval windows in the sliding panel. What a piece of rolling sculpture. Under restoration is an Arnolt MG roadster. An MG with a TD Chassis and an Italian

*It is claimed  
that this ma-  
chine was hit-  
ting 100 without  
even breathing  
hard*

## NAMGBR Annual General Meeting

On Saturday October 23rd from noon till 5P.M. at the Sheraton Midway Hotel, 400 N. Hamline Ave. St. Paul MN, the North American MGB Register will have it's Annual General Meeting. We can be sure that the 2001 International Meet will be discussed as well as other Register business. The Meeting will be in the Sleepy Hollow meeting room.

If you are not a member of the NAMGBR you should consider joining. They are the register for all Midgets and 1100/1300s as well. The MMGG is an affiliated club and the NAMGBR is one of the registers that is sponsoring the 2001 meet. Sometimes they have really good articles in their magazine too.

The Sheraton Midway can be reached at (651) 642-1234.

It is just north of I-94 on Hamline. Between the Snelling and Lexington avenue exits.

## Paint Codes for some common British car accessories:

### Austin-Healey

(Note: there are 2 different greens used on Sprites & Midgets through the years.)

- Big Healey, & some Sprite/Midget engines:  
Metalic Light Green Moss # 220-550  
POR 15 lists "Austin Healey Green" in pints & qts. (I hope this is the metalic shade)
- other Sprite/Midget engines:  
Olive Green Moss # 220-580

### MG

- MG TC engine -Green  
Bill Hirsch "MG Green"  
POR 15 "MG Maroon" (pint \$16, Qt. \$25)
- MG TD, TF, A, & B engine -Deep Maroon  
RM # E3123M  
Moss# 220-540  
Krylon Maroon (close)  
Bill Hirsch "MG Maroon" (by the pint & quart)
- MGA, MGB, Midget Fan & Pulley- Yellow  
Duplicolor # T-211  
International Harvester I-H Yellow (used on Cub Cadet Mower:.)

### Wheels - Hammered Silver

DITZ# DAR 2593  
Duplicolor# FM-149 or T229  
Moss # 220-560  
Plasticote 1587 (may soften existing paint)

From Team.net

## President's Corner

(Continued from page 2)

bakery goodies for all. A real class operation.

Too soon it was time to continue on to Whistler that was still about 70k away. The road climbing along the inland coast of British Columbia was awesome with waterfalls coming out of the rocks all the way and snowcapped peaks and glaciers around virtually every corner. Some of us stopped at Shannon Falls and as we got out of our MGs, immediately noticed the roar from the water literally hurling off the top of the cliff. Whistler is a ski resort that not too long ago was a sleepy fishing village, and it included the usual shopping center. All the MGs were invited to park along the pedestrian walkway through the village. It was a great display. Several ski lifts snaked up the side of the mountain and many of us took a gondola up to have lunch in the snowfield at 7000 feet. The view was spectacular (yes, that word again, but nothing else does it justice,) with snowcapped peaks in every direction.

As we had driven up to Whistler that morning, I had been relishing the idea of the drive back. I told Mary to get ready for some spirited driving on the way down. She didn't say anything and hung on. I don't think I've ever had as much fun in an MG as I did winding down that coast. A beautiful Mid-60's Corvette (red, of course) appeared in the rear view mirror part way down and the GT cornered a bit faster than the Vette, and stayed ahead until we approached a passing lane. Then the Vette rocketed past and disappeared. It was fun while it lasted. The freeways of Vancouver appeared much too soon and the spirited drive was over. Mary made it and may even have enjoyed her spouse's nutty driving. She didn't say too much.

To have the experience of the drive to Whistler, you will have to go there sometime. I know we will again. You don't however, have to go to Welch's marina to see those great vintage MGs. Next year, many just like them will be in Duluth, on the "Norwegian Riviera" as our Minnesota T Register partners host the GOF Central in Mid-July. The host hotel is the Inn on the Lake in Canal Park and the T register has those rooms all reserved. I have made reservations for 15 rooms at the adjacent Hampton Inn in anticipation of the MMGG being there in strength, and I hope many of you will set aside a couple of days next July to attend. The Chair of the event (and MMGG member) Lew Palmer wrote me a letter inviting the MMGG to help them make this event a success. The Minnesota "T's" will be our partners in the 2001 national event and this is a great opportunity to help them put on their own event and gain some experience for 2001. Give the event subcommittee chairs a call and volunteer to make the GOF a great success.

By the way, MMGG members Jerry and Marilyn Cathcart won the enroute quiz we were given to complete on the way to Whistler. Needless to say, they must have a great relationship.

See you at the Merrill's garage. Doug.

## An Invitation . . .

The following is taken from Lew Palmer's letter to the our President regarding next year's GOF Central:

As you may be aware the Minnesota MG T register is hosting GOF Central in Duluth, July 18th-21st 2000. Judging from the enthusiasm of many MGers at the recent GOF in St. Louis, we expect this to be one of the largest and best GOFs in recent years.

As Chairman of the event I would like to formally invite the Minnesota MG Group to participate in the event, not only as attendees, but we would welcome volunteers from your membership to work with the chairmen of some of the activities. I have developed job descriptions for each of the positions, so *no one* should feel that they wouldn't know what to do.

Call one of the chairs listed here or see Doug's column, in this Gazette, for more information on how you can get involved in this event. This is the perfect opportunity for all of us to help our "elder brothers" in the T register (cool down, I'm referring to the cars.) and get some invaluable experience that will help us all make 2001 something really special.

## The Tombstone Trail

Come and try one of the longest running, best attended car club events in Minnesota. All you need is 2 people, a car, a pencil, a flashlight and a sense of adventure. We'll take you on a scavenger hunt around rural Minnesota that you won't forget. Be prepared to visit some strange places!

This is a Halloween rally/ Scavenger Hunt sponsored by the Corvettes of Minnesota. It's open to anybody and I have heard that it is a LOT of fun. It is on Saturday, October 30th 1999.

The competition is broken into 4 classes, so you're always competing with people whose experience is similar to your own: I'm guessing we'd all be in Class D since we've never participated in the past.

Registration is \$15.00 for Non-members with \$1 off per costumed participant. Register from 6:00 - 7:00 PM at a spot to be determined. The first car will start around 7:00 and finish around 10:00. Contact Mark Larson (612) 502-0440 (e-mail Mark@marblesoft.com) for details.

This is a family-friendly event, bring a carload, but only two people can participate outside of the car.

See: <http://www.winternet.com/~marble/tombstone/> for more information.

## GOF Central Mk XXI

Position	Name	Phone
Chairman	Lew Palmer	651-436-7401
Treasurer	George Christopherson	612-866-8428
Publicity	Lee Dahlberg (?)	612-890-2184
Registration	Darlene Palmer	651-436-7401
Car Show	Dave Honnigford	612-926-7140
Rally/Tour	Steve Guttormson	218-728-4037
Valve Cover Racing	George Christopherson	612-866-8428
Ladies Events	Rosemary Guttormson	218-728-4037
Auction Raffle	Bob Figenskau	612-935-7909
1st Timers	Dave Honnigford	612-926-7140
Banquet /MC	Jerry Thorsen	612-588-7986
Hospitality	Jenni Honigford	612-926-7140
Tech Sessions	Tim Crain (?)	612-920-2489
Flea Market	Warren Johnson (?)	651-484-2009
Funkhana/ Gymkhana	Bill Allen (?)	612-472-3189
Kidkhana		
Safety Check	Mark Brandow	612-472-3189
Regalia	Marty Shane	651-439-8427
Photo Contest		
Craft Contest		
Trophies	Darlene Palmer	651-436-7401
Packet	Herb Hemenway(?)	507-645-9422
Site Liason	Steve Guttormson	218-728-4037
Publicity	Rosemary Guttormson	218-728-4037
Insurance	Tom Maine	612-881-1331



Curt Carlson and "Gerty" his 1966 Austin Healey Sprite.



## Classifieds

### FOR SALE :

**1975 MG Midget.** 23,000 miles. Excellent condition. Price Negotiable.

John Lauzon  
Bessemer, MI  
(906) 667-0051  
(Bessemer is on the U.P. near the WI border)

### FOR SALE :

**1961 MGA Roadster.** Parts car Missing mainly seats and one door. Quite rusty but no real damage. \$650 Also new Drivers side door pocket for MGA. \$30.

(507) 455-0243 Jerry Hudrlik Owatonna

### FOR SALE :

**1974 MGB Roadster.** Hardtop and ragtop. Excellent mechanical condition. British Racing Green with detailing. 4speed, luggage rack. \$3500 or best offer

(612) 828-9931 Marlene or LeRoy  
Eden Prairie

### FOR SALE :

**1970 MG Midget.** Stored in garage for years, also complete 948cc A-series engine (correct for very early Midget or Sprite Make offers (612) 755-9212

### FOR SALE :

**1968 GT6** Runs great no rust, \$4200  
also Alfetta GT runs - needs paint \$2500  
Walter - (320) 240-9559 St. Cloud

## Wheels and Wings *Curt Carlson*

### MMGG captures title again!

Well fellow MMGG'ers. For those of you who missed Osceola this year, you missed a good one. The weather was perfect, the participation impressive, (over 1200 collectible cars). MMGG won "best club participation" again this year (tying with the MN Street Rod Assn.) with over 40 cars. The Street Rodders came out of nowhere. We can't let them take our "birthright" title from us next year. We've won the "best club participation" award every year that I'VE attended Osceola. Let's make sure we don't end our winning streak.

The day started out bright and crisp with all of us meeting up at Perkins in Roseville. After some socializing, we headed out to Osceola through Washington County in groups of 5-8 cars. Gerty and I "winged it" using some of the route through Washington County that was used for the "Roadkill Rally" earlier this summer. We didn't see much roadkill, but we did have a very nice drive on some meandering, windy, twisty roads. The route turned out well, but I had to stop 1/2 way to warm my hands (Gerty was topless).

*(Continued on page 9)*

### SERVICE:

#### Motoring Goodies

We have a garage stall ready and waiting for your T-series winter project.  
Bob Figenskau 612-935-7909

### FOR SALE :

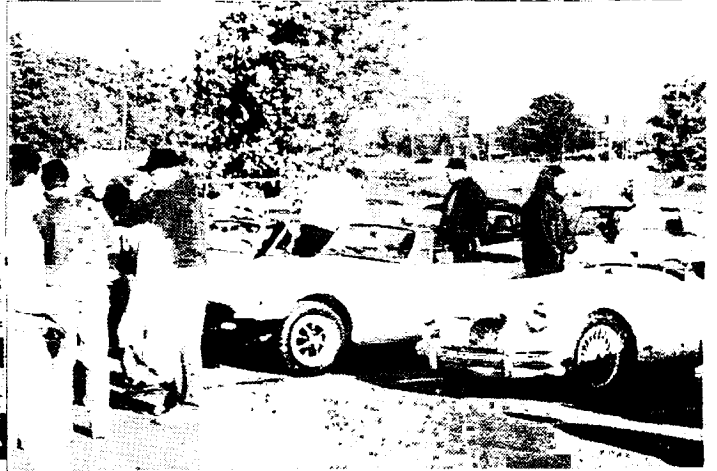
**1969 MGB GT.** Red. For parts or full restoration. Complete car, interior rough, wire wheels, some rust, cracked head. Parked 5 years.

\$1000 or best offer  
(612) 941-0884 Denny Eden Prairie

### FOR SALE :

**1973 Midget,** Blue. New top, nice interior, steel wheels, runs OK.

\$1500  
(612)241-8300 Paul Elk River



MINN



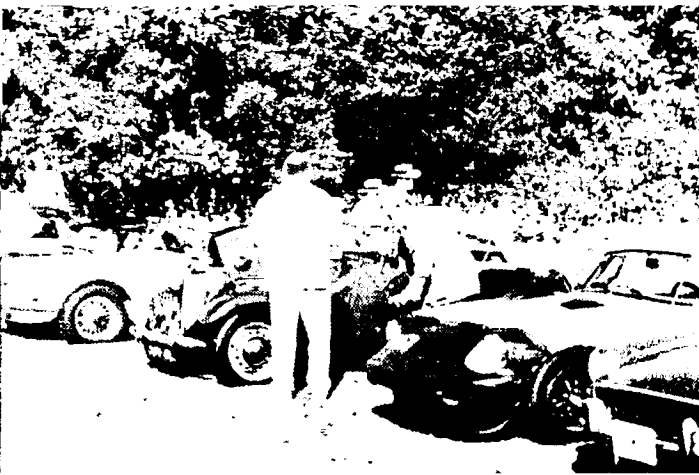
GR  
GAZ

Octo

Wh  
&  
W



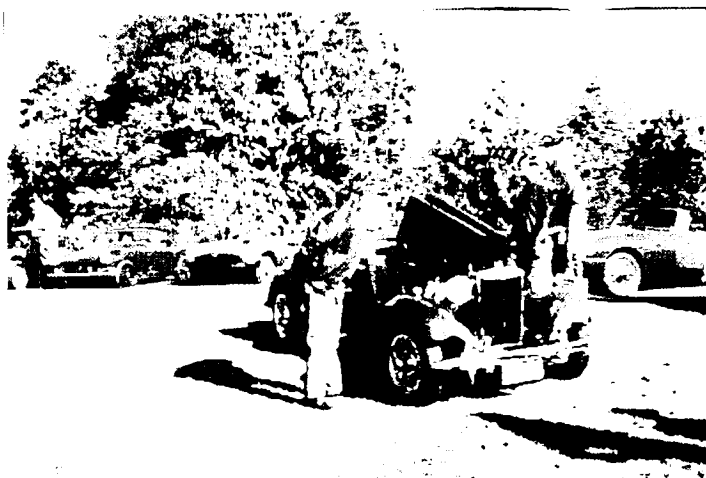
With ne  
MGs at  
our gro  
with th  
Rods fo  
Award f  
club vi  
largest  
atte i  
the MG  
Doug Ma  
First P  
Jim Hen  
took Se



# ESOTA D



# POUP LETTE er 1999



# heels nd ings

arly 50  
Osceola  
up tied  
e Street  
r the  
or the  
th the  
umber  
a. In  
Class  
dson von  
lace and  
dershott  
cond.



# Those Maps on Page 8:

The Merrill Estate: 851 21<sup>st</sup> Ave North South St Paul, MN 55075 (651) 455-5681

The map shows a section of St Paul, Minnesota. At the top, a box contains the address: "The Merrill Estate: 851 21<sup>st</sup> Ave North South St Paul, MN 55075 (651) 455-5681". Below this, a star is placed on a road labeled "21<sup>st</sup> Ave". A vertical road is labeled "US 52". Other roads shown include "Concord St.", "Thompson St.", and "Mendota Rd.". Two horizontal roads are labeled "I-94" and "I-494". A starburst shape on the left contains the text "St Paul". A north arrow is located to the right of the map.

The Merrills Garage stuffing and potluck party. Be there. Even if you have to drive something boring.

Saturday September 25th  
3PM until they feed us to the dinosaurs or throw us out

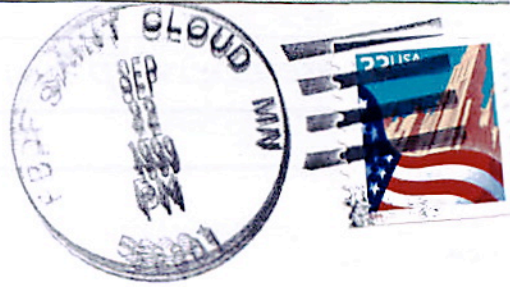
## Fall Colour Tour - 9AM October 9th

The map shows a route starting in "St Paul" and heading east on "I-94". It passes through "Woodbury" and "Carver Ave". A box labeled "I-494" is shown. The route continues east on "I-94" to "MN 95". From "MN 95", the route goes south on "CR 21 (Stagecoach Rd.)" and then east on "CR 18". A star marks the location of "Afton Village Coffee" at "3321 S. St Croix Tr (651) 436-3366". The route also shows "US 61" and "Bailey Rd. (40<sup>th</sup>)". A note says "There is an exit 63A". The map is divided into "MN" and "WI" by the "St Croix River". A north arrow is present.





Minnesota MG Group  
10305 Morris Road  
Bloomington, MN 55437



HOW'S THE GARAGE?  
COMING?  
SEE YOU AT THE FALL COLOR TOUR -  
BARB & LARRY

Randy Byboth Cindy O'Brien  
5041 Beacon Hill Rd Pd99  
Minnetonka MN 55345



SMILE & BE HAPPY

**In This Issue...**

35 The Fall Color Tour, NAMGBR Annual Meeting, an Invitation and more!!!!

## 1999 Schedule

Date	Event	Host	Place
September			
11	Wheels and Wings	Robinsons and Strands	Osceola, WI
25	Potluck	The Merrills	South St. Paul
30	2001 Planning Meeting	Comfort Inn	Roseville
October 9	Fall Color Tour	Al Webster	Afton and points East
22-24	NAMGBR national meeting	Sheraton Midway	St Paul
November	Annual Business Meeting	Doug and Mary Madson	
January '00	Holiday Party	I know somebody volunteered for this! Who are you?	

## 2001 Planning Meeting

On Thursday, September 30 there will be a meeting for all those interested in helping to plan the 2001 International MG Meet. We will meet from 7:00 PM until 9:00 PM at:

The Comfort Inn - Rosedale  
2715 Long Lake Rd,  
Roseville, Minnesota 55113-1131  
612-636-5800

The Comfort Inn is just north of County Road C across from Wally McCarthy Olds. Take the Cty Rd. C Exit from 35W, go west 1 block on C to Long Lake Rd., then north to the Inn.

All are welcome to participate - we need your help